



443^a

C. & G. SURVEY,
LIBRARY AND ARCHIVES

APR 4 - 1910
Acc No.

Department of Commerce and Labor
COAST AND GEODETIC SURVEY

W. L. Litchman
Superintendent.

State: *Cal.*

DESCRIPTIVE REPORT.

Tip^c Sheet No. *443^a*

LOCALITY:

*Loguel Cove and
Vicinity - Monterey
Bay*

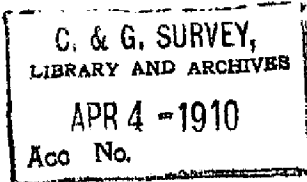
1910

CHIEF OF PARTY:

Ferdinand Westlake

443

Descriptive Report of Revision of Topography^{ic} Sheet No. 443

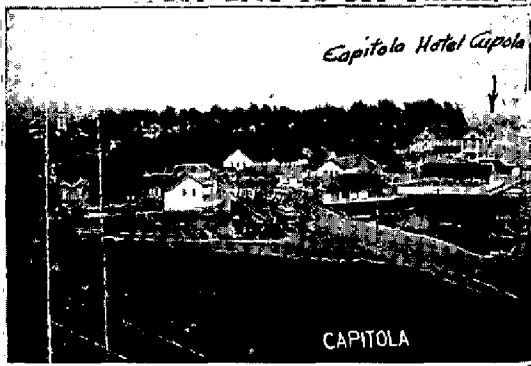


No. 443

This sheet extends from Sequel Point to Leonard Δ . All shoreline was re-run showing apparent small changes since the original survey. Erosion of the bluff from Sequel Pt. to Capitola is caused by the wash of the waves.

H. W. mark is at the foot of the bluffs which are vertical-shown thus ~~|||||~~

★ Top Bluff Line. Below Capitola the H. W. mark is at varying distances from the



Erosion is caused for the most part by surface water

the soil being very light, a sandy loam. The face

in places by a growth of small bushes and weeds.

Aptos are the three villages on this sheet.

built up on the flats West of the hotel; the latter

mark and is quite conspicuous from the ocean. There

are also many closely built cottages on the plateau East and West of the

gulch. Those to the Eastward are hidden by a double row of tall eucalyptus

trees on the very edge of the cliff. Sequel is in the gulch back of Capitola

and is not visible from the sea. Aptos is on the East side of Aptos Creek

and is fairly well visible from the bay. There is no business of any importance

at any of these towns; all may be considered as tributary to Santa Cruz.

Capitola is a summer resort town and is practically deserted in winter. The



flat at Aptos are abandoned as indicated on the tracings.

mill and house on Sequel Point are prominent.

large white building backed by trees; the cross on

building West of the hotel, is a definite point.

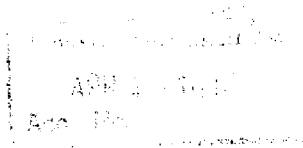
school-house. The windmill and stack of the

pla.

The staff on the Bay View Hotel at Aptos.


443^a

Descriptive Report of Revision of
Topography Sheet No. 443



No. 443

This sheet extends from Sequel Point to Leonard A. All shoreline was re-run showing apparent small changes since the original survey. Erosion of the bluff from Sequel Pt. to Capitola is caused by the wash of the waves.

H. W. mark is at the foot of the bluffs which are vertical-shown thus *

* Top Bluff Line. Below Capitola the H. W. mark is at varying distances from the foot of the bluff; erosion is caused for the most part by surface water and is quite pronounced the soil being very light, a sandy loam. The face of the bluff is covered in places by a growth of small bushes and weeds.

Capitola, Sequel and Aptos are the three villages on this sheet.

Capitola is very thickly built up on the flats West of the hotel; the latter building fronts on H. W. mark and is quite conspicuous from the ocean. There are also many closely built cottages on the plateau East and West of the gulch. Those to the Eastward are hidden by a double row of tall eucalyptus trees on the very edge of the cliff. Sequel is in the gulch back of Capitola and is not visible from the sea. Aptos is on the East side of Aptos Creek and is fairly well visible from the bay. There is no business of any importance at any of these towns; all may be considered as tributary to Santa Cruz. Capitola is a summer resort town and is practically deserted in winter. The cottages and hotel on the flat at Aptos are abandoned as indicated on the tracings.

Landmarks:- The windmill and house on Sequel Point are prominent.

The Del Mar Hotel is a large white building backed by trees; the cross on the church, a small square building West of the hotel, is a definite point.

The cupola of the Sequel school-house. The windmill and stack of the planing mill West of Capitola.

The staff on the Bay View Hotel at Aptos.

The church spire West of Aptos; the South gable of this church shows up well from the Southward. Note:- The Mt. Diablo Meridian as shown on this sheet was plotted from notes referring it to the corner of the church plat in the County Surveyors office at Santa Cruz.

The group of barns East of the East boundary of the Aptos Rancho are whitewashed and visible for a long distance to the Westward.

Railroads:- An electric railway from Santa Cruz to Capitola is shown, *it* descends into the valley in which that village is built.

The Southern Pacific R.R. follows the general trend of the coast the entire length of this sheet coming close to the bluff above and below Capitola and below Leonard. The Loma Prieta Lumber R.R. is in a *fine* ~~fine~~ state of repair; an occasional car load of lumber is brought out over it; it runs to foot of Mt. Bache.

Roads:- All roads unless otherwise indicated were run in in the field; these marked " copied " from county maps were transferred from the County Assessors maps. These maps show property lines and roads and are fairly accurate; there are at present no tracings of these maps. If it were desired to place the town of Watsonville on our charts I think it would be sufficient for our purposes ^{not} to make copies of them and transfer from these copies, the originals ^{not} may be taken from the office. Points in common to the topographic sheets and the Assessors maps are: Plats of Santa Cruz, Capitola, Soquel, East boundary Aptos Rancho, Wharf at Port Watsonville, property lines, roads, etc.

Wharves on this sheet:- There is no trace of the wharf at Aptos shown in red ink on the original sheet. The wharf at Capitola is in a fair state of repair; it is used by a few fishing boats only. A small jetty on the East side of the creek near it is said to have caused a deposit of sand around the wharf so that there is very little water. I will not vouch for the truth of this statement. Note:- All artificial features of the topography are shown

on the tracings, those on the original sheets should all be removed.

All stations used were located by ⁶trangulations, no old points being re-covered and there being no points or rocks of definite and permanent character.

Soquel Point 2, New Brighton, and Leonard were occupied, Capitola Hotel cupola is an intersection station.

Statute miles of roads, ----- 21 mi.
 " " " R.R. ----- 12.7 mi.
 Shoreline, ----- 8.5 mi.
 Area, sq. miles, ----- 8.5 sq. mi.

Respectfully submitted,

L. M. Cade

Aid, Coast & G. Survey.

 Latitudes and Longitudes of Definite Points.

Windmill Soquel Pt. -----	36 ° 57 ' 595 ^m	121 ° 58 ' 538 ^m
(+)-Cross on church near Del Mar.-	36 57 1246	121 59 307
School House Cupola, Soquel.--	36 59 373	121 57 533
Church Spire, Aptos. -----	36 58 1588	121 54 773
Staff on Bay View Hotel, Aptos.-	36 58 1210	121 53 1445

83
STH
443A
W
1910

443^a

C. & G. SURVEY,
LIBRARY AND ARCHIVES
JUN 11 1910
Acc. No.

Department of Commerce and Labor COAST AND GEODETIC SURVEY <i>O. H. Littmann</i> Superintendent. State: <i>California</i> DESCRIPTIVE REPORT. → Top <i>2</i> Sheet No. <i>443a</i> LOCALITY: <i>Loguel Cove and</i> <i>Vicinity. Supple-</i> <i>mentary Survey.</i> 1910 CHIEF OF PARTY: <i>F. Westdahl</i>
--

Should be attached to descript. report
of 443^a received about Apr. 5th, 1910

Descriptive Report of additional work on revision of Chart No. 443 -

Soquel Point to Δ Leonard.C. & G. SURVEY,
LIBRARY AND ARCHIVES

JUN 1 1910

Acc No.

Soquel Creek,-

The bed of the creek was located from Capitola to Soquel, by means of a traverse line run along the East side of the creek and with rod readings and measured distances ^{to} in the creek bank through the trees and thick underbrush wherever possible. The creek was carrying between 200 and 300 ~~mines~~ inches of water in May, 1910. The banks are heavily fringed with trees and deciduous undergrowth, which practically hide the stream except at the road crossings.

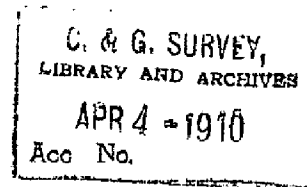
Valencia Creek,-

Valencia Creek for a third of a mile above its mouth lies in a broad, partially timbered, canon. Just below Aptos it divides, and has a branch on either side of the village; the eastern branch again divides into two branches at a point just above the village. All of the branches above the lower junction flow in deep canons, heavily wooded along the banks, and on the slopes and bottoms. These canons are about 75 feet deep and from 50 to 100 meters wide. A traverse line was run through the broad lower part of the cañon, but along the upper parts where the banks become precipitous and hidden by the heavy timber and underbrush, it was necessary to locate the stream by paced distances from a traverse line along the edge of the cleared ground.

Respectfully submitted,

H. W. Rhodes.
asst. C. & G. S.

443^a



REVISION OF TOPOGRAPHY MONTEREY BAY, CALIF.

Original Sheet No. 443 , Sequel Pt. to Leonard ^Δ

^Δ
Trangulation and Topography by C.M.Cade and R.R.Lukens, Aids.

U. S. Coast and Geodetic Survey.

Under the direction of Ferdinand Westdahl, Assistant.

U. S. Coast and Geodetic Survey.

+ Mary
February, 1910.
^